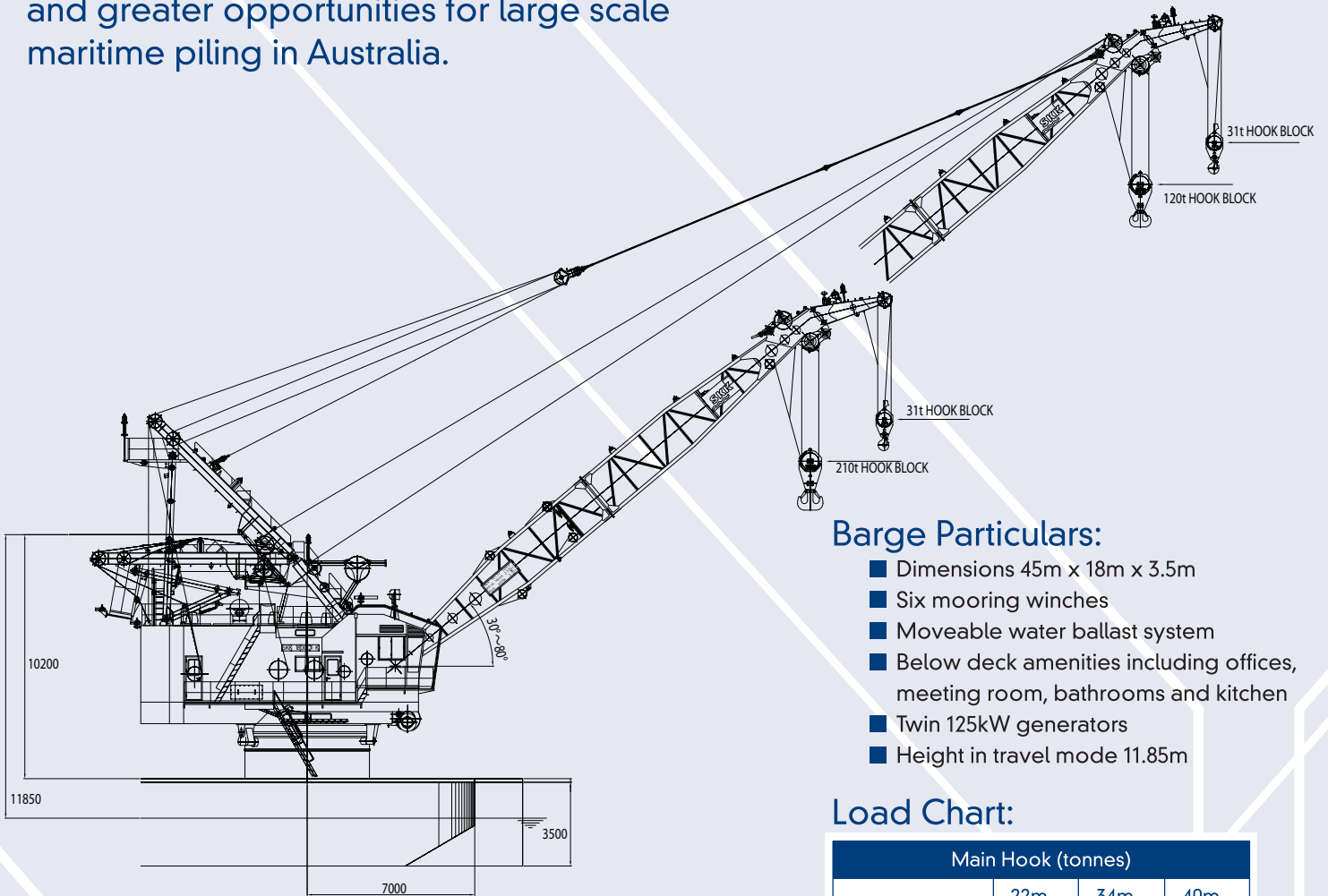


A new generation of crane barge and piling rig for Australia



'Kochi' is the new flagship of Waterway Constructions' fleet of maritime construction barges, providing increased lifting capacity and greater opportunities for large scale maritime piling in Australia.



Barge Particulars:

- Dimensions 45m x 18m x 3.5m
- Six mooring winches
- Moveable water ballast system
- Below deck amenities including offices, meeting room, bathrooms and kitchen
- Twin 125kW generators
- Height in travel mode 11.85m

Load Chart:

Main Hook (tonnes)			
Radius (m)	22m Jib	34m Jib	40m Jib
8.2	210.0		
9.0	210.0		
10.3	183.1	151.0	
11.4	165.5	151.0	114.0
12.1	155.2	151.0	114.0
14.0	133.4	130.8	114.0
15.4	119.5	118.0	114.0
18.0	100.7	98.9	95.7
20.0	89.2	87.4	85.0
22.0	79.4	77.7	75.2
23.1	74.8	73.1	70.7
26.0		62.5	60.4
30.0		51.2	49.5
33.5		43.4	42.1
36.0			37.7
38.7			33.4

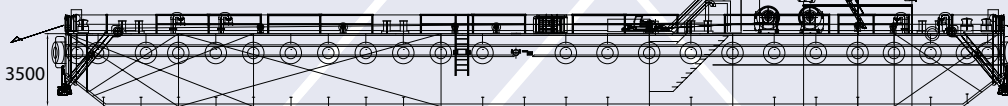
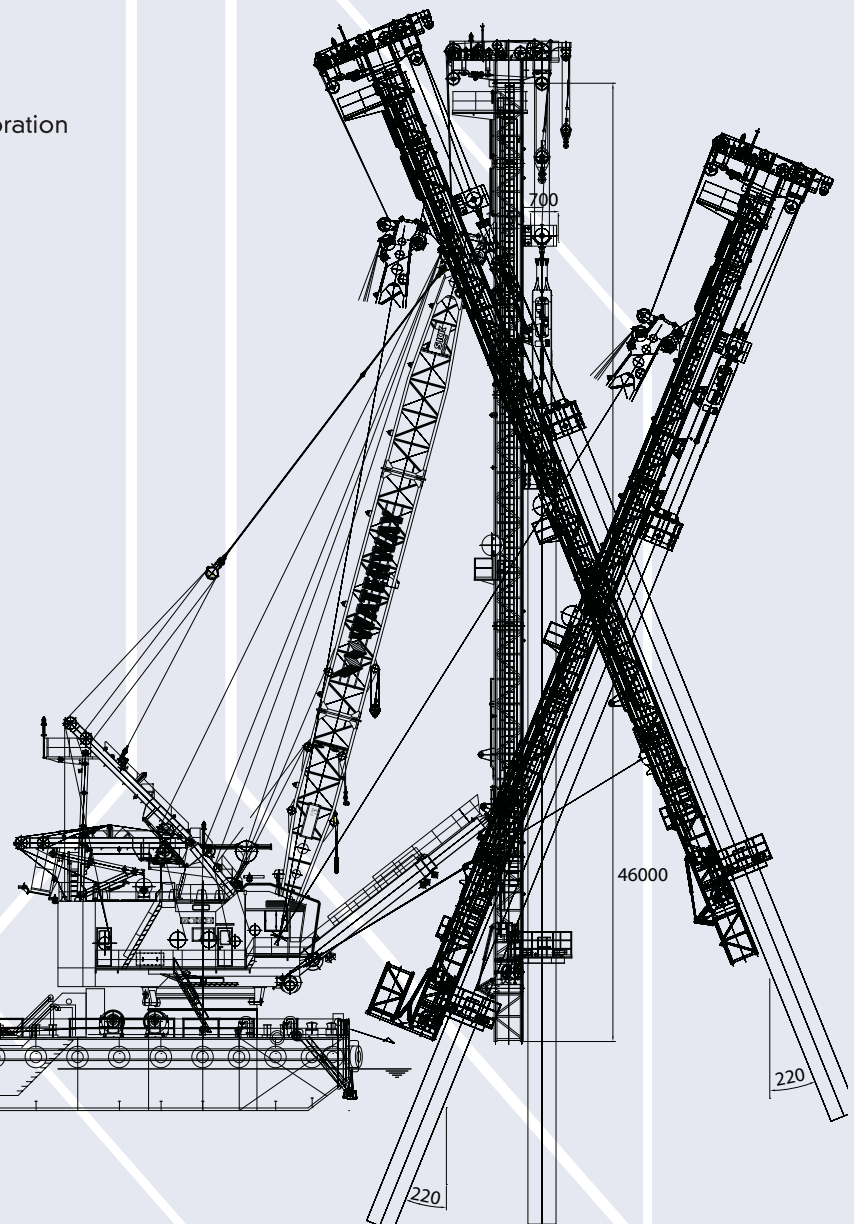
Auxiliary Hook (tonnes)			
Radius (m)	22m Jib	34m Jib	40m Jib
9.5 to 26.5	31.0		
11.6 to 36.9		31.0	
12.6 to 42.1			21.0





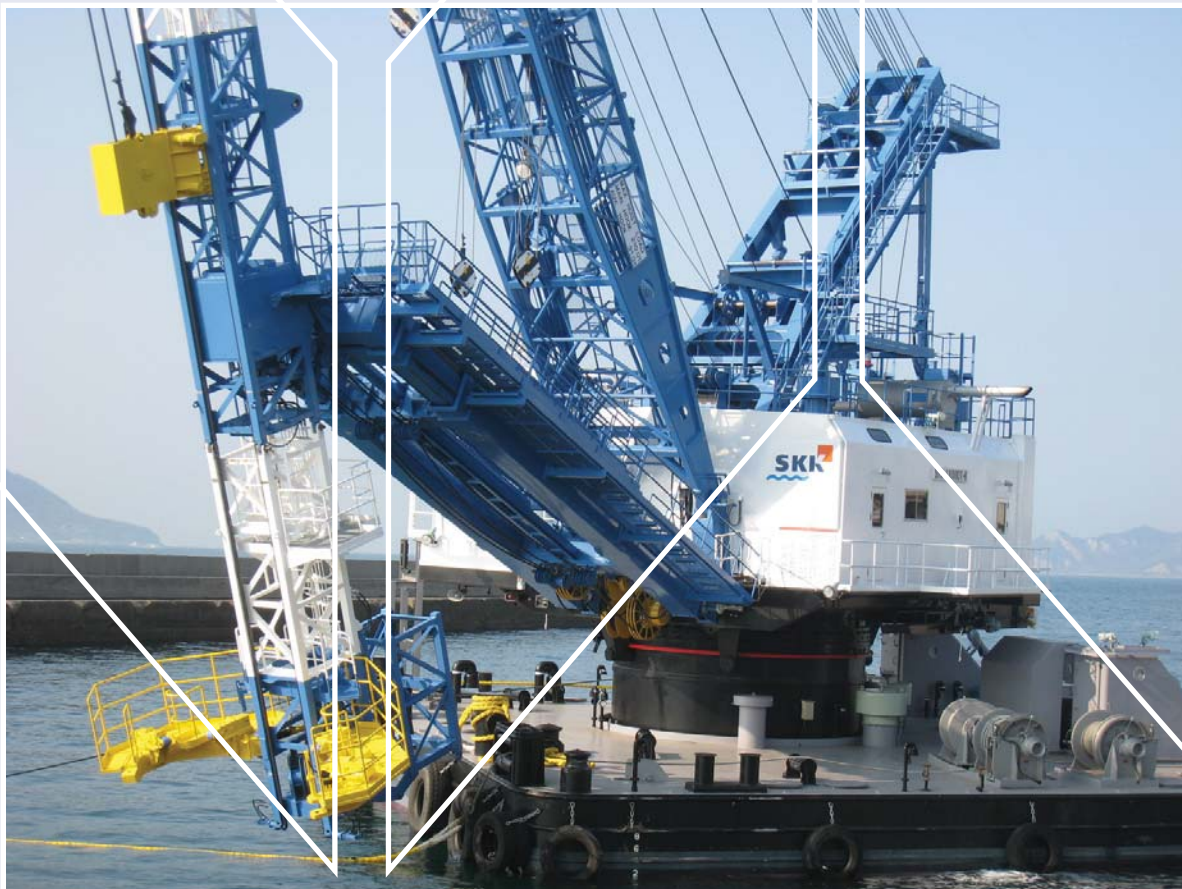
Piling:

- Installation by hammering, vibration, drilling or screwing
- Combined pile and hammer weight 60 tonnes
- Pile diameters 400mm to 1500mm
- Raking to +/-22 degrees (1 in 2.5)
- Maximum drilling torque 30 tonne metres
- 30 tonnes crowd force to assist drilling and vibration
- GPS pile positioning
- Real time pile installation monitoring



Waterway Constructions

- Specialises in maritime works including wharves, marine piling, pipelines and other port and harbour works
- Delivers effective solutions through innovation, experience and engineering excellence
- Offers a range of services including construction, asset maintenance and heritage restoration
- Is committed to client satisfaction from design development to project execution



 **WATERWAY**
CONSTRUCTIONS
Your partner in excellence



Queensland Office
PO Box 637
Hamilton QLD 4007
P: (07) 3268 5600
F: (07) 3268 5800
qld@waterway.com.au

NSW Office
PO Box 290
Annandale NSW 2038
P: (02) 9555 2211
F: (02) 9555 1144
nsw@waterway.com.au

Victorian Office
1 Ann Street
Williamstown VIC 3016
P: (03) 9397 3942
F: (03) 9397 6606
vic@waterway.com.au

www.waterway.com.au